

User's manual

for monitoring, automation
and remote control module

"Mini-Monster"

(revision 3.0 and higher)

Appendix 1

"Humistat" – humidity control option

v. 1.1 English

With Mini-Monster you can control relative humidity by connecting DHT-22 sensor. One module supports only one sensor.

DHT-22 must be connected to 5th and 6th ports of the module as shown on the diagram below.

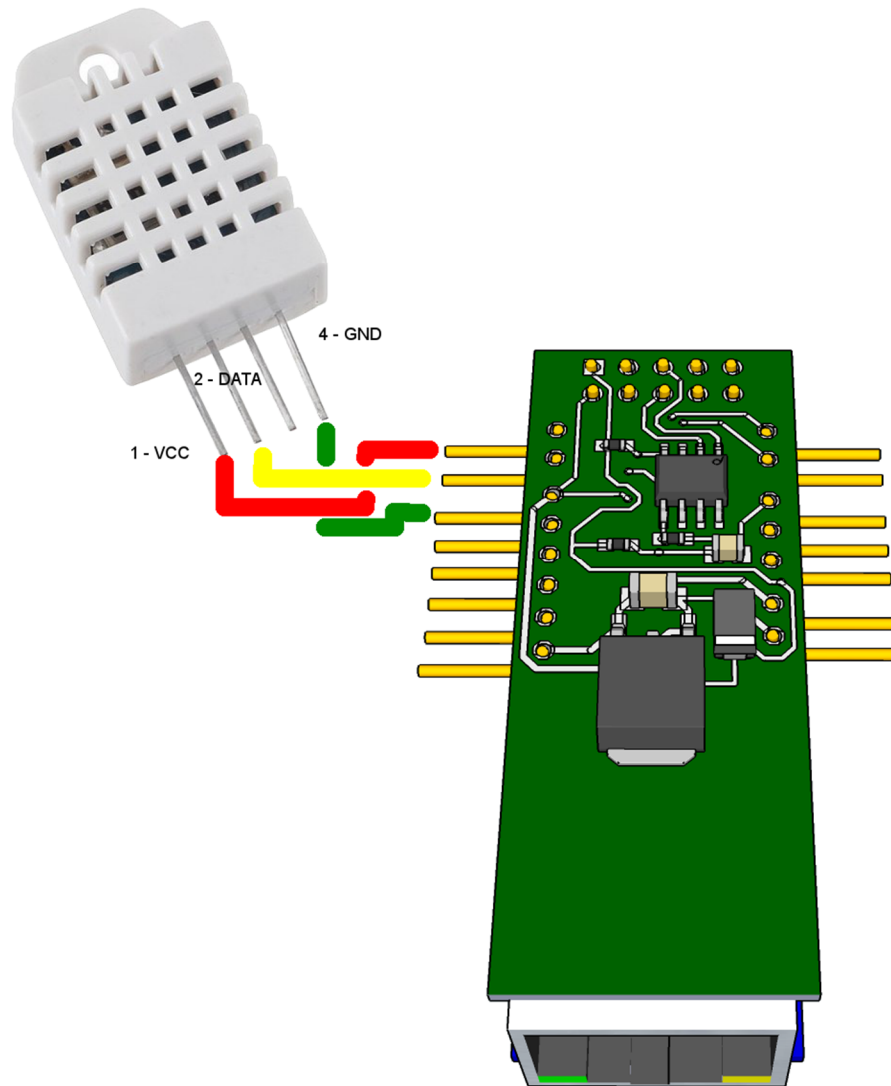


Diagram1. Connecting DHT-22 to Mini-Monster

It's important to make all connections **before** powering the module!

Scale of the humidity measurement is 1%. You can assign one of the MM's port to "Humistat" function.

Humistat interface:

192.168.1.5/password/

Mini-Monster32NF
[main](#) [humistat](#) [settings](#)

[Humistat ON] [turn OFF](#)
h = 59%
Output 1: **OFF**

Port
Target
Hyst
Cal
Mode

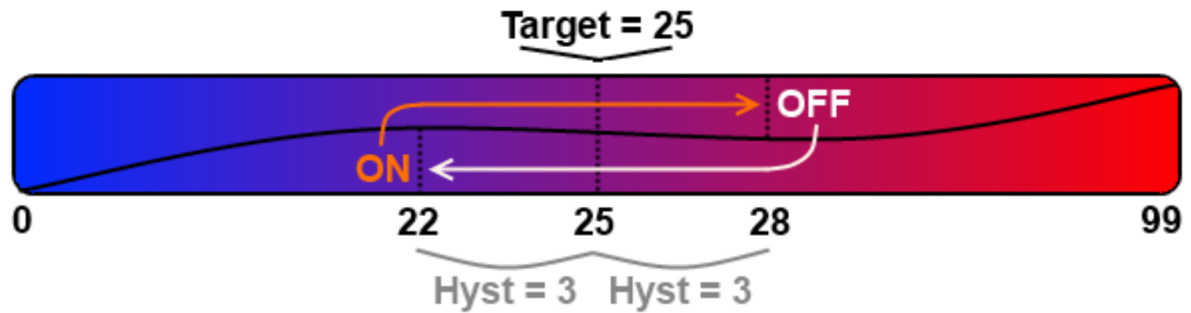
From top to bottom:

- ON/OFF switch - enables and disables "Humistat"
- Current humidity reading,
- Current state of the assigned port.

Port – assigned port of Mini-Monster which will be controlled by "Humistat". You can choose from 1 to 4 and from 1 to 6 while using with "Server" option.

Target – set the target humidity.

Hysteresis – parameter allows to specify a range of operating the output. The value is absolute and unsigned. This value will be added and subtracted from the «Target». For example, when target humidity is 25% degrees and hysteresis is set to 3%, Mini-Monster will switch output ON on 22% and will switch output OFF on 28%. (in WET mode)



Cal – allows you to adjust the sensor, as different sensors often has errors (usually linear) within two degrees. This value can be positive or negative. This parameter is always added to or subtracted from the data obtained from the sensor

Mode – you can choose between WET and DRY modes. In WET mode Mini-Monster turns output on when humidity drops below target-hyst value and switch off while it's rise above target+hyst. In DRY mode output's logic is inverted.

no sensor - DHT-22 sensor is not found or don't working/connected properly